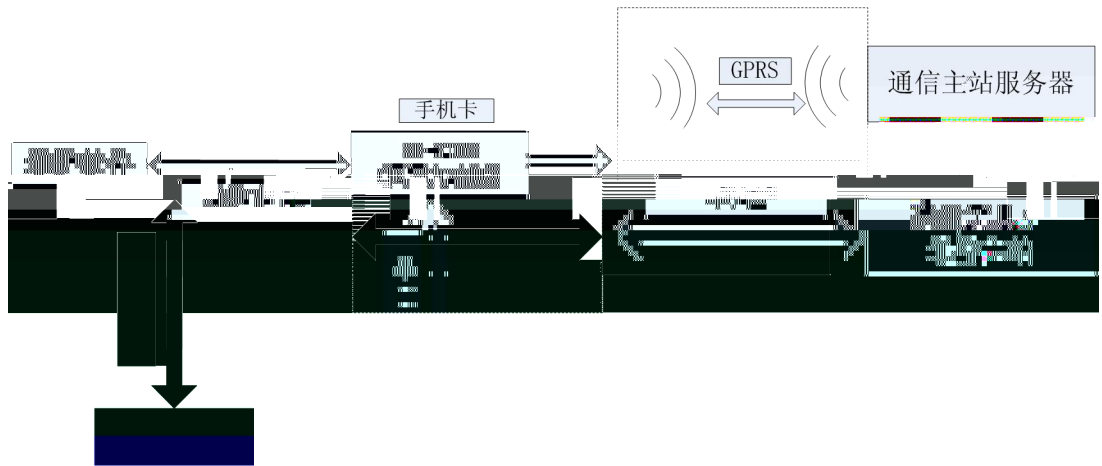




**1.1**

## 2.1

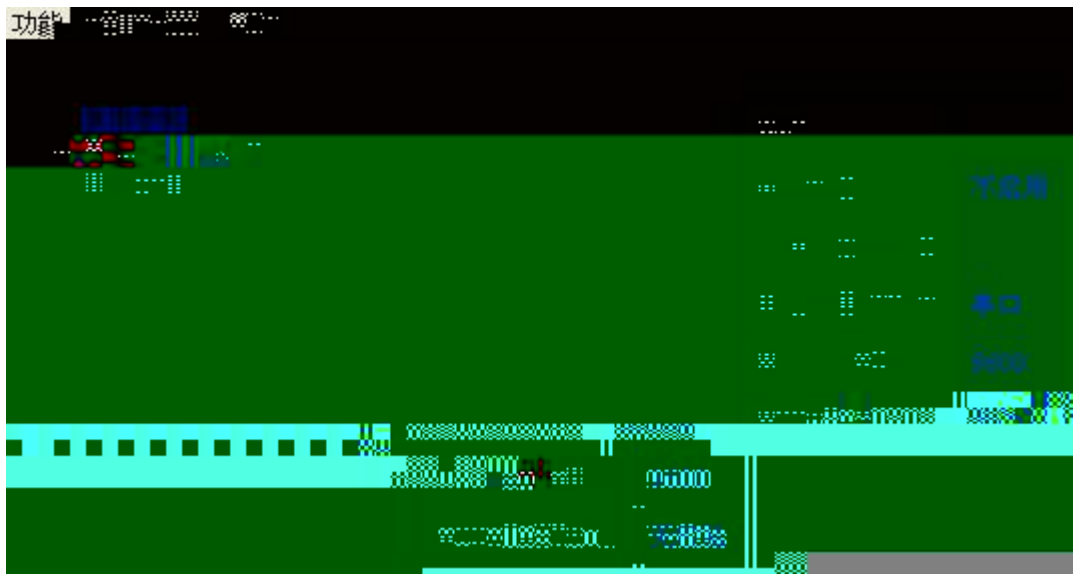


" " " " " "

" "

" "

## 2.2









功能 通信设置 帮助

常用参数

通道模式

串口参数

模块ID

通道服务号码

信息查看

名称	卡1	卡2
短信编码格式	GSM	GSM
短信服务中心号码 (未使用)		
APN (最大64位)		
用户名 (最大32位)		
密码 (最大32位)		
手机号码 (以+86开头)		
SIM卡类型	静态IP	静态IP
网络模式	自动	自动

" "

" "

" " " "

" "

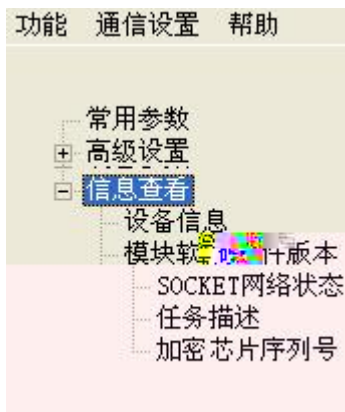
" "

" " " " " "

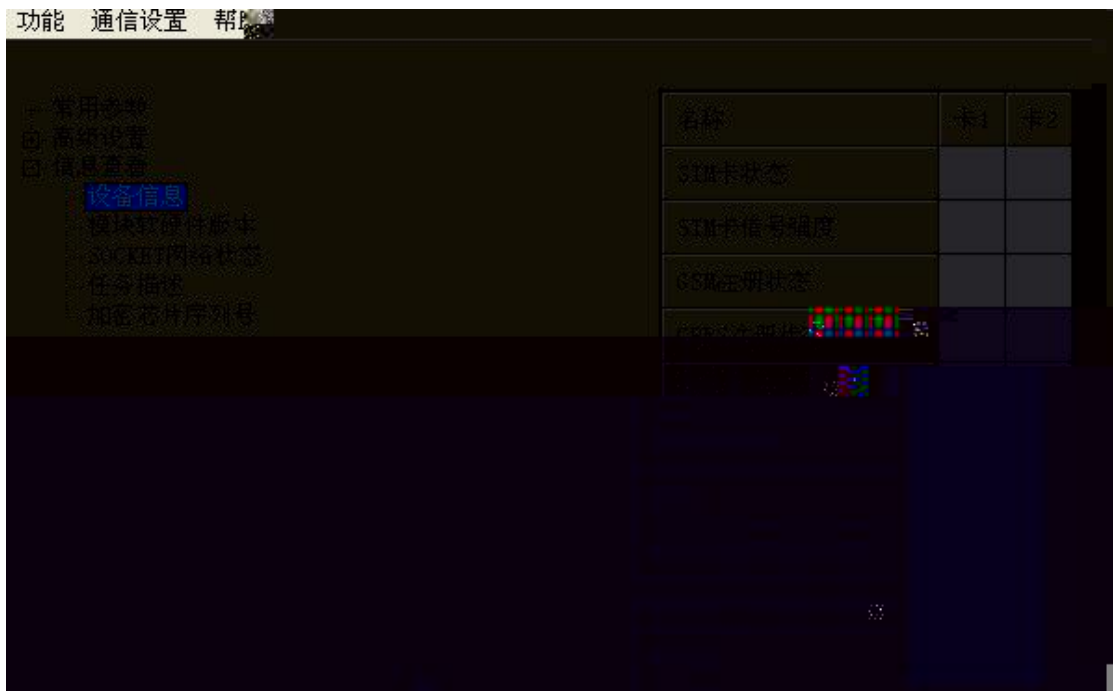
" "



## 2.4



" "



" " " "

" " " "

" " " "

" " " "

" " " " " "

常用参数

高

- 信息查看

设备信息

模块型号

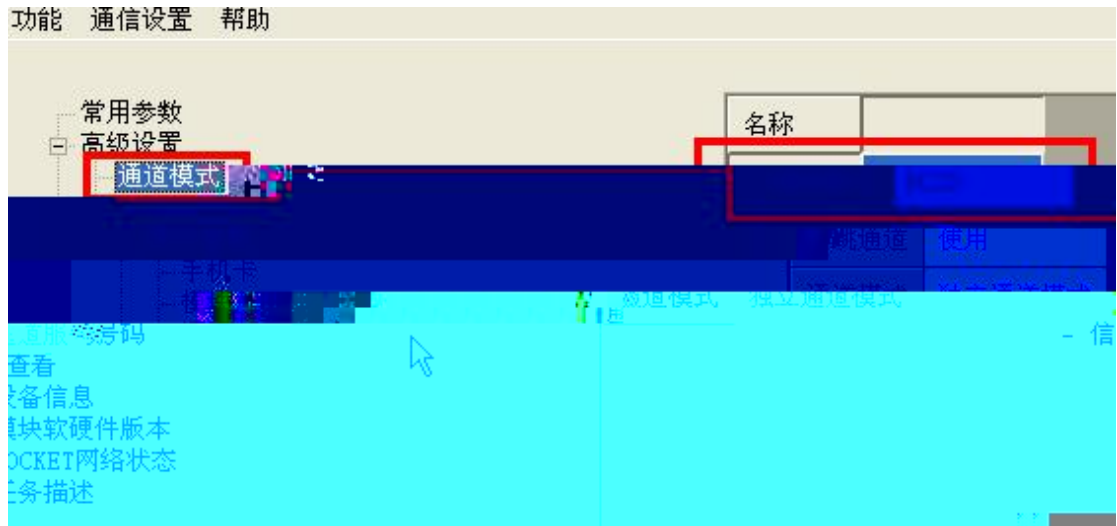
SOCKET

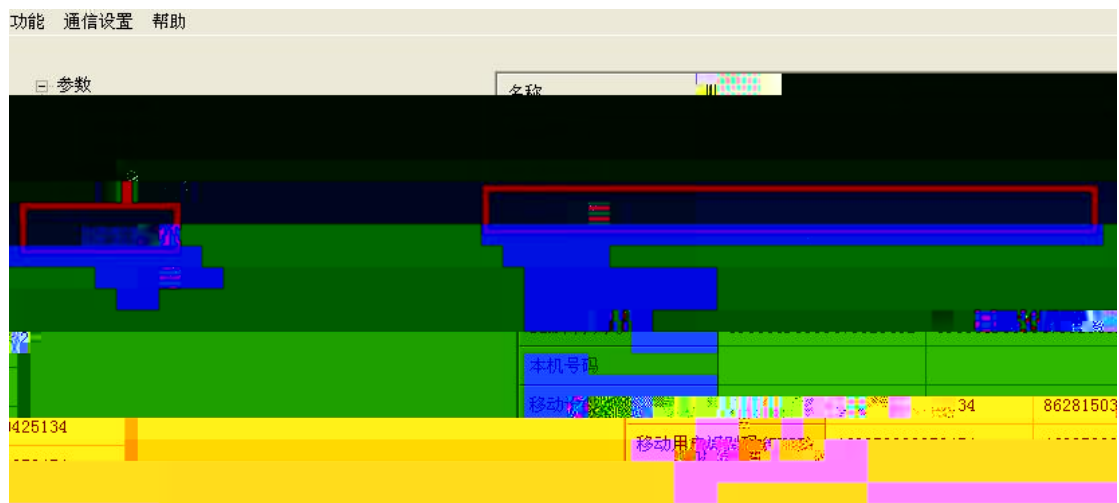
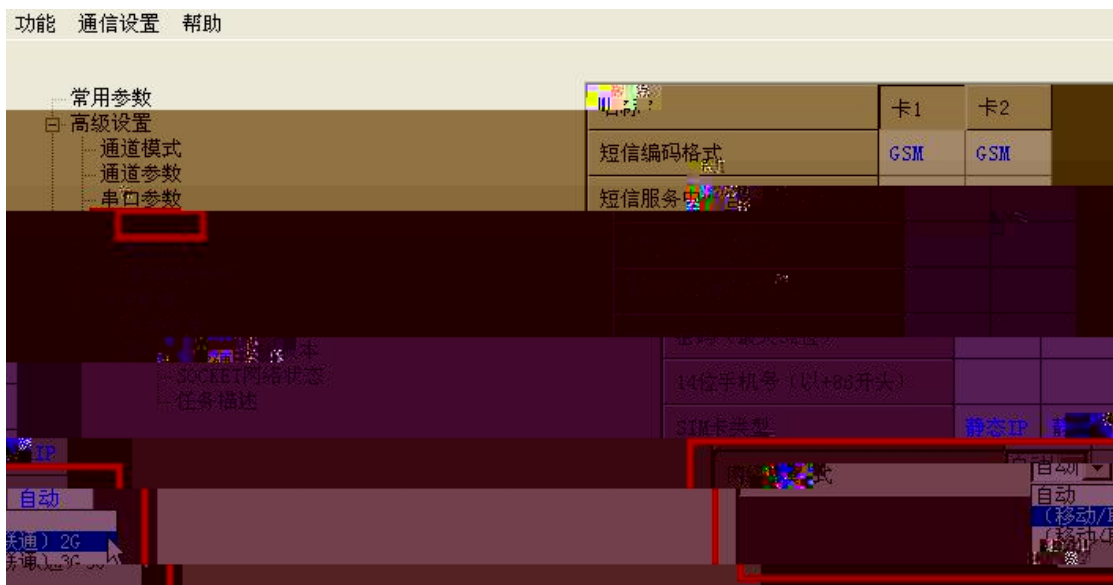
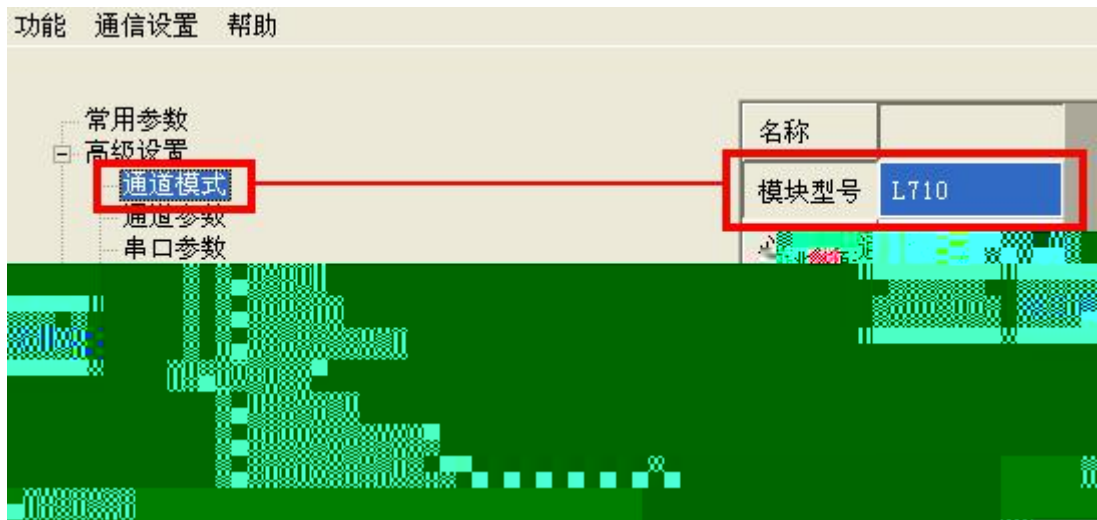
任务编号

加密

名称	版本
厂商代号	
模块型号	
软件版本号	
软件发布日期	
硬件版本号	
硬件发布日期	

" "



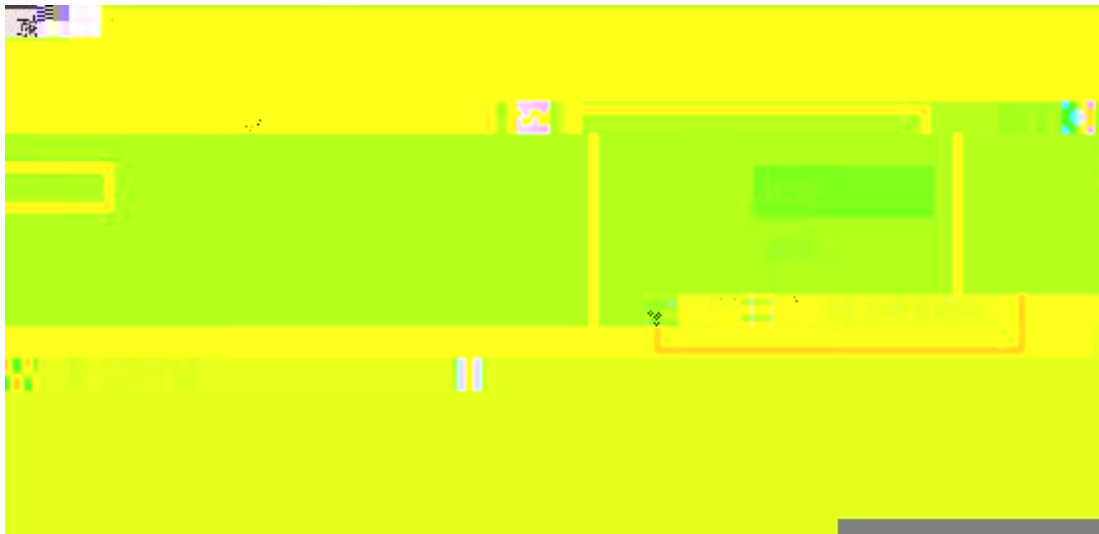
## 2.6

" " " "

" " " "

" " " "

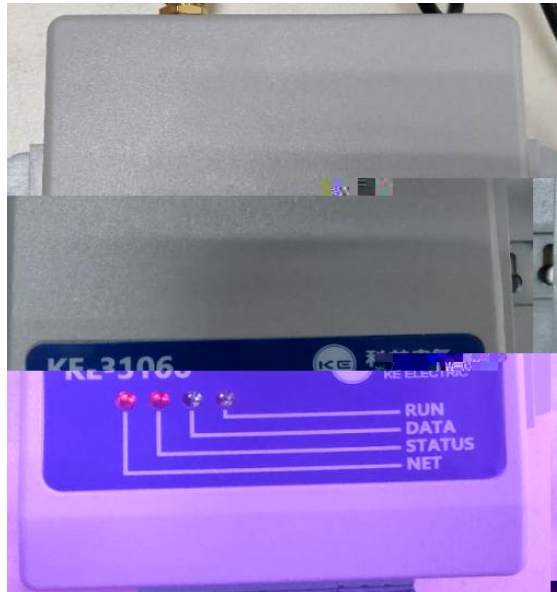
" " " "



## 3.1

" " " " " "  
" "  
"

## 4.2




## 4.3

## 4.4






## 4.5

“ ”